

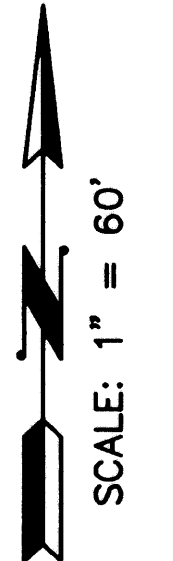
# MIRASOL WALK

LYING IN SECTION 3, TOWNSHIP 42 SOUTH, RANGE 42 EAST  
 CITY OF PALM BEACH GARDENS, PALM BEACH COUNTY, FLORIDA  
 SHEET NO. 3 OF 3  
 DECEMBER - 2003

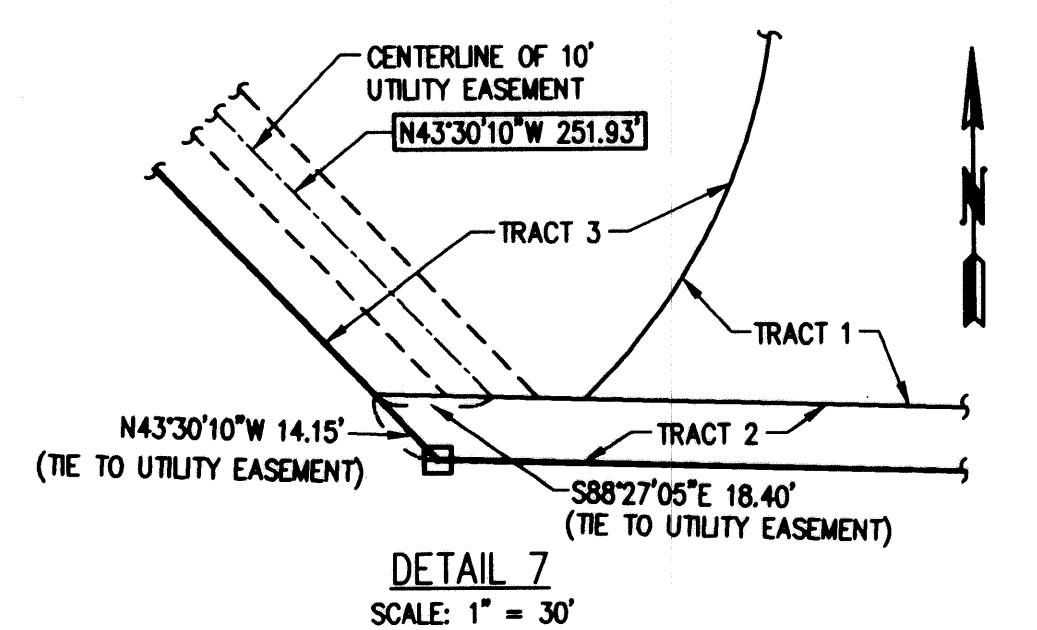
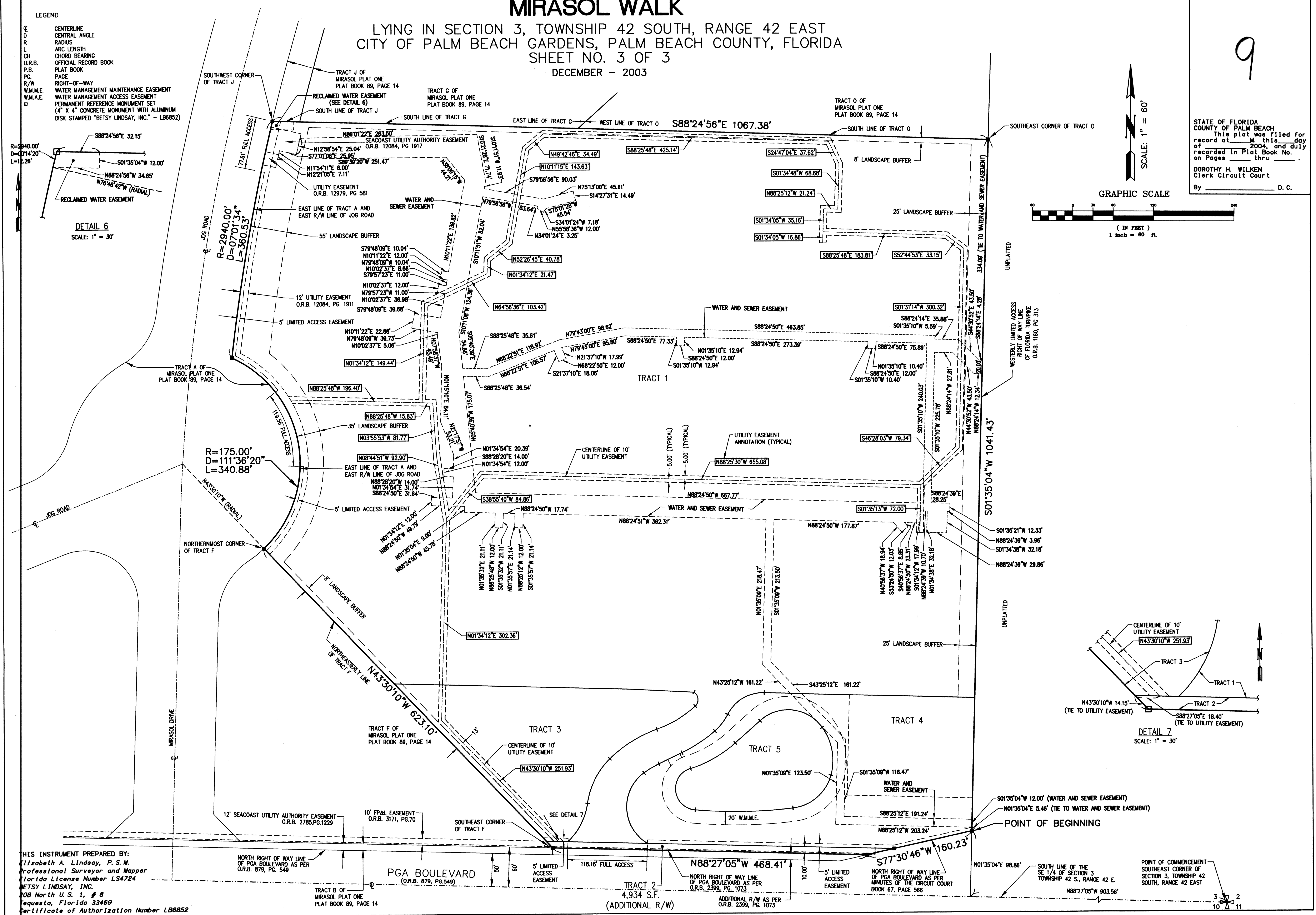
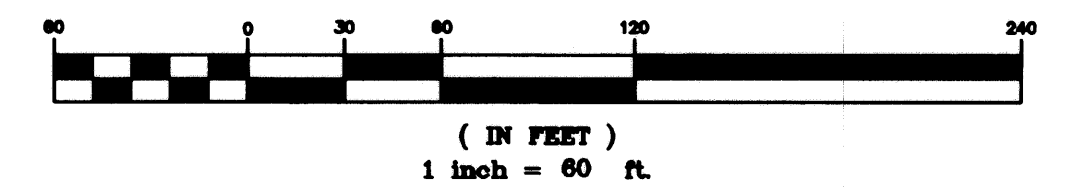
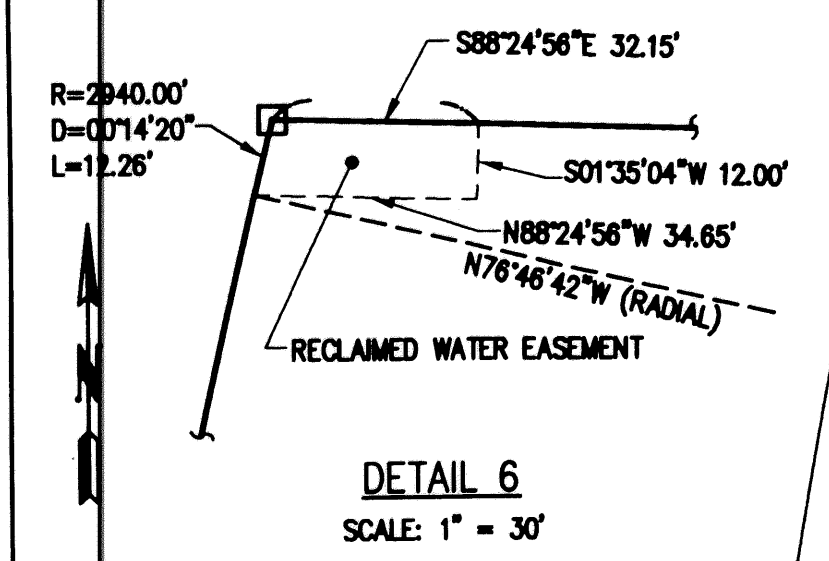
9

LEGEND

C	CENTERLINE
D	CENTRAL ANGLE
R	RADIUS
L	ARC LENGTH
CH	CHORD BEARING
O.R.B.	OFFICIAL RECORD BOOK
P.B.	PLAT BOOK
PG.	PAGE
R/W	RIGHT-OF-WAY
W.M.M.E.	WATER MANAGEMENT MAINTENANCE EASEMENT
W.A.E.	WATER ACCESS EASEMENT
PM	PERMANENT REFERENCE MONUMENT SET (4" X 4" CONCRETE MONUMENT WITH ALUMINUM DISK STAMPED "BETSY LINDSAY, INC." - LB6852)



STATE OF FLORIDA  
 COUNTY OF PALM BEACH  
 This plat was filed for record at \_\_\_\_\_ M. this day of \_\_\_\_\_ 2004, and duly recorded in Plat Book No. \_\_\_\_\_ thru \_\_\_\_\_  
 By DOROTHY H. WILKEN Clerk Circuit Court  
 \_\_\_\_\_ D. C.



THIS INSTRUMENT PREPARED BY:  
 Elizabeth A. Lindsay, P.S.M.  
 Professional Surveyor and Mapper  
 Florida License Number LS4724  
 BETSY LINDSAY, INC.  
 208 North U.S. 1, # 8  
 Tequesta, Florida 33469  
 Certificate of Authorization Number LB6852

COMPUTED	
DRAWN	JAD
CHECKED	
APPROVED	
JOB NO.	21-069.11

